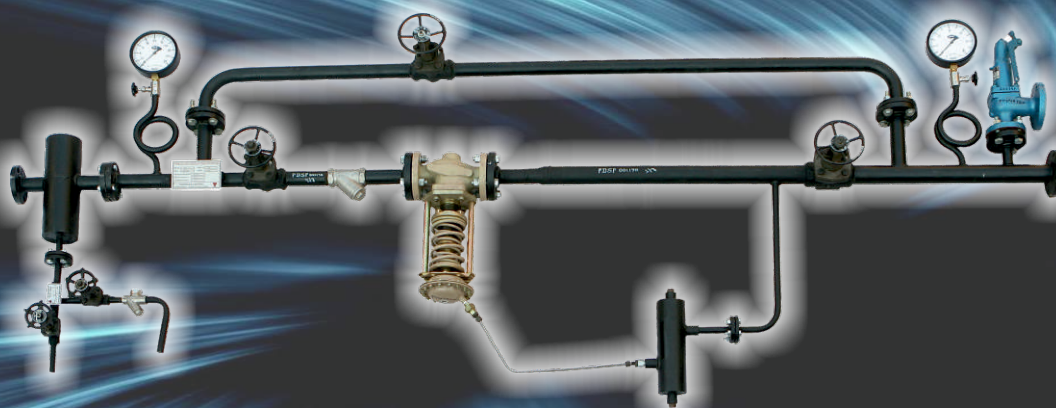




Energy Environment Solutions for Sustainable Growth

TPRS



Pressure Reducing Station

STEAM ENGINEERING

Introduction

Thermax Pressure Reducing Station (TPRS) is a prefabricated ready to assemble module comprises of Direct acting pressure regulating valve, isolation valves, pipes and fittings intended to reduce steam pressure to designed conditions.

Features

- Designed as per best steam engineering practices
- Safety valve sized for full discharge capacity of the PRS
- Specially designed flow divider to ensure low noise levels
- Rugged in design
- Can be used in hazardous area without any electrical connections
- Operates even in low flow conditions
- Quick response to pressure changes
- Ready to install i.e. reduces installation time and field engineering
- Maintenance free and user friendly
- Both IBR certified and non IBR PRS available

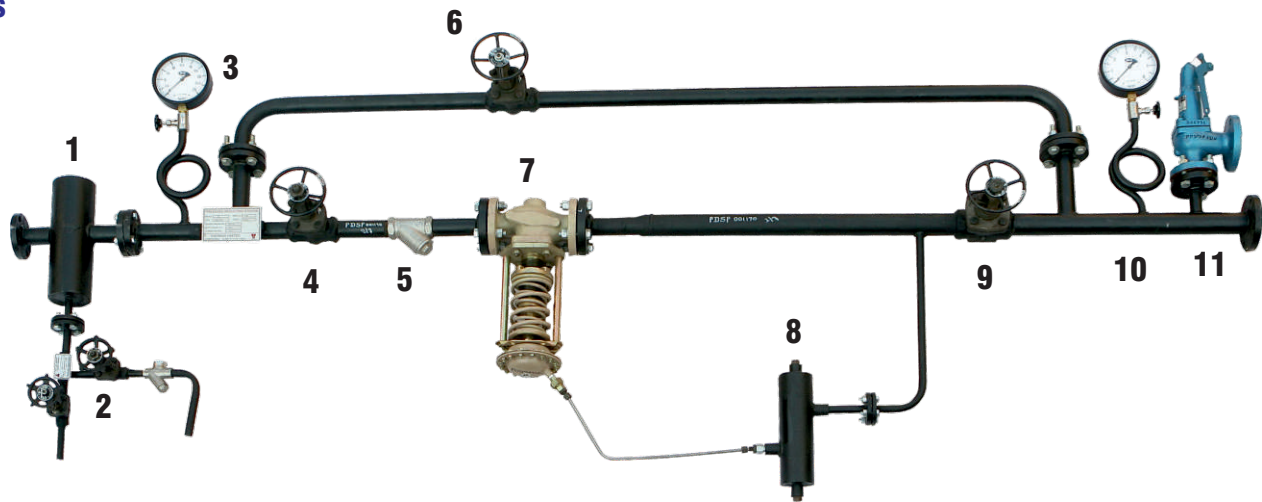
Technical Specification

Design Pressure :	Inlet	Outlet
	10.5 kg/cm ²	3.5 kg/cm ²
	17.5 kg/cm ²	8 kg/cm ²
Design Temperature :	Saturated steam temperature	
Capacity :	100 - 8000 kg/h and higher	
Size :	15 - 200 NB and higher	

Application

- Process applications with continuous steady steam requirement
- Where high accuracy of control is not required
- Where electricity & compressed air are not easily available
- Can be used even in hazardous area.
- This is a low maintenance system where skilled operators are not available

Components



Sr No	Components
1	Moisture Separator
2	Thermodynamic Trap Module
3	Inlet Pressure Gauge with Siphon and Valve
4	Inlet Valve
5	Strainer
6	Bypass Valve

Sr No	Components
7	Pressure Reducing Valve (PRV)
8	Condensate Pot
9	Outlet Valve
10	Outlet Pressure Gauge with Siphon and Valve
11	Safety Relief Valve

Material List

Sr No	Description	Material of Construction	Specifications
1	Pipe	Forged Steel	ASTM A106 Gr. B
2	Flanges	Forged Steel	ASTM A105 / Equivalent *
3	Gate / Globe Valves or Bellow Seal Valves **	Cast Steel body SS trim Cast Steel body, SS Stellite trim and bellow in Titanium steel material	ASTM A216 Gr. WCB
4	Direct Acting PRV	Cast Steel body SS trim	ASTM A216 Gr. WCB
5	Safety Valve	Cast Steel body SS trim	ASTM A216 Gr. WCB

* Flanges may be fabricated from boiler quality plates if design standards permit it.

** Bellow seal valves are alternative to cast steel gate / globe valves if specified.



www.thermaxglobal.com

Ver. 1 - Jun 2020

Registered Office

D-13, MIDC Industrial Area,
R D Aga Road, Chinchwad,
Pune 411019, India

enquiry@thermaxglobal.com

Customer Care: 1800-209-0115



www.linkedin.com/company/thermax

Thermax Business Portfolio

- Heating
- Cooling
- Steam Engineering
- Air Pollution Control
- Chemicals
- Water and Wastewater Solutions
- Solar
- Power